

Type „O-R“ - round



Compatible with OPTIMA 2000

Tip	MA-AC-O-xxx-LB
AirCap	MA-AC-O-R-LB

Type „O-H“ - hexagon



Compatible with OPTIMA 2100

Tip	MA-AC-O-H-xxx-LB
AirCap	MA-AC-O-H-LB

Type „GR“



Compatible with GRACO AAM/AAF/GG4

Tip	MA-AC-GR-AA-xxx-LB
Tip with preorifice	MA-AC-GR-AF-xxx-LB

Compatible with GRACO AXM/AXF

Tip	MA-AC-GR-AX-xxx-LB
Tip with preorifice	MA-AC-GR-AXF-xxx-LB

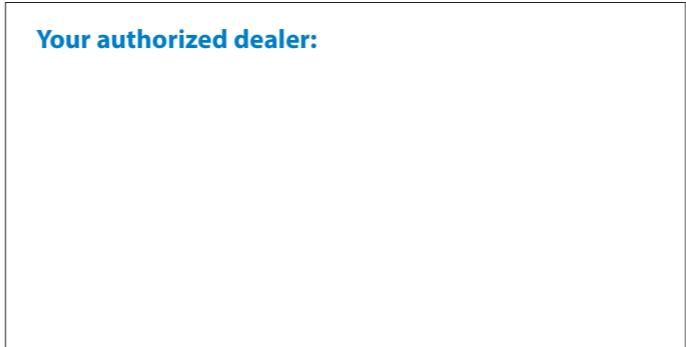


Crucial advantages:

- ✓ Interchangeable alternative to all well-known brands
- ✓ Tungsten carbide tip insert for long lifetime
- ✓ Made in Germany
- ✓ Highest availability – fastest delivery
- ✓ Customised production for private label



Your authorized dealer:



Type „KR“



Compatible with KREMLIN XCite/ATX/AVX

Tip	MA-AC-KR-xxxx4-LB
Tip with preorifice	MA-AC-KR-xxxx2-LB
AirCap	MA-AC-6524-LB

Type „S“



Compatible with SAGOLA

Tip	MA-AC-S-xxx-LB
Tip with preorifice	MA-AC-SF-xxx-LB

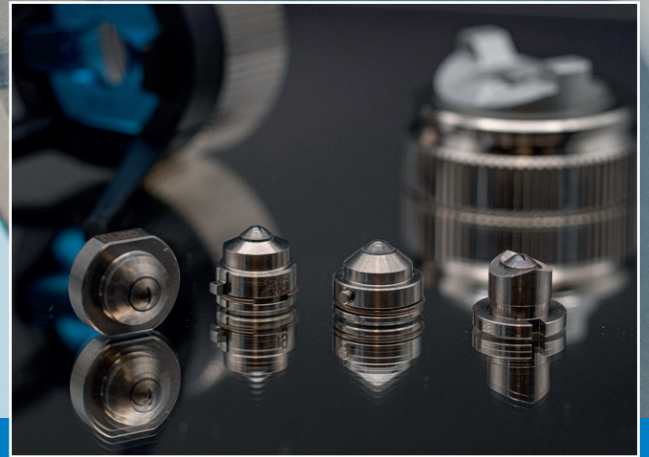
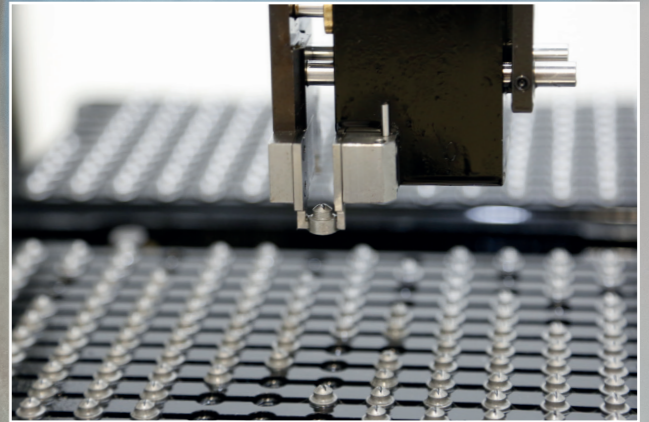
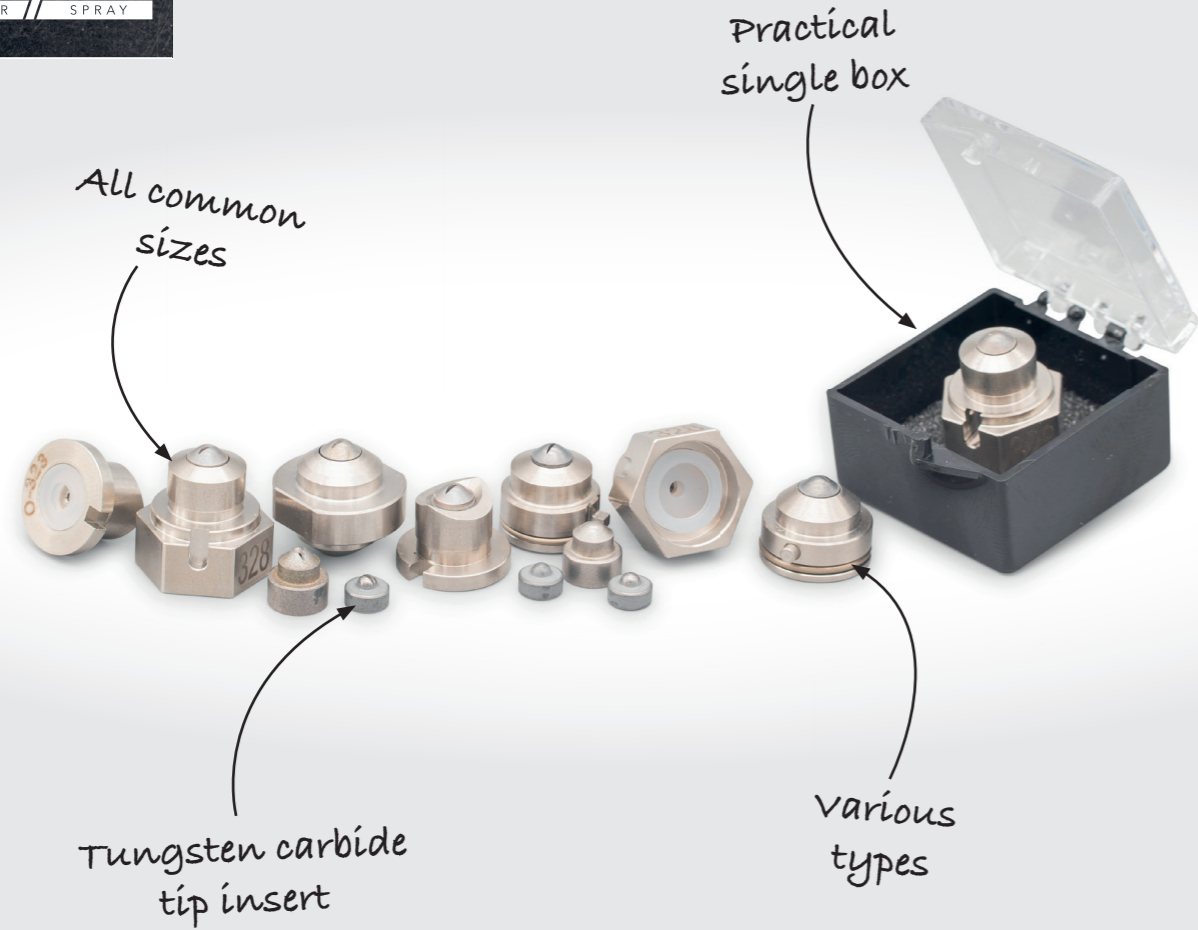
Type „W“



Compatible with WAGNER W379xxx

Tip	MA-AC-W4-xxx-LB
AirCap blue	MA-AC-W47-B-LB
AirCap red	MA-AC-W47-R-LB

AIRCOMBI TIP SYSTEMS



MADE IN GERMANY

Our MASPRA AirCombi tips are **compatible with** the tip systems of the following brands:

- » GRACO (AAM/AAF/GG4)
- » GRACO (AXM/AXF)
- » KREMLIN (XCite/ATX/AVX)
- » OPTIMA (2000/2100)
- » SAGOLA
- » WAGNER (W379xxx)

We manufacture spray tips for surface technology on our **fully automatic CNC machines** with a production capacity of currently **500,000 tips per year**.

Our focus is on the development and production of AirCombi and Airless paint spray tips up to **500 bar**, made from robust and resistant **hard metal** (tungsten carbide).

In addition to a wide range of standard and reversible airless tips, we also produce AirCombi tips at the **highest level of quality**.

Built into hardened stainless steel housings, Gemini MASPRA tips offer the best solution for the AirCombi spraying process. **100% Made in Germany**.